

## GABRIELLE MYERS

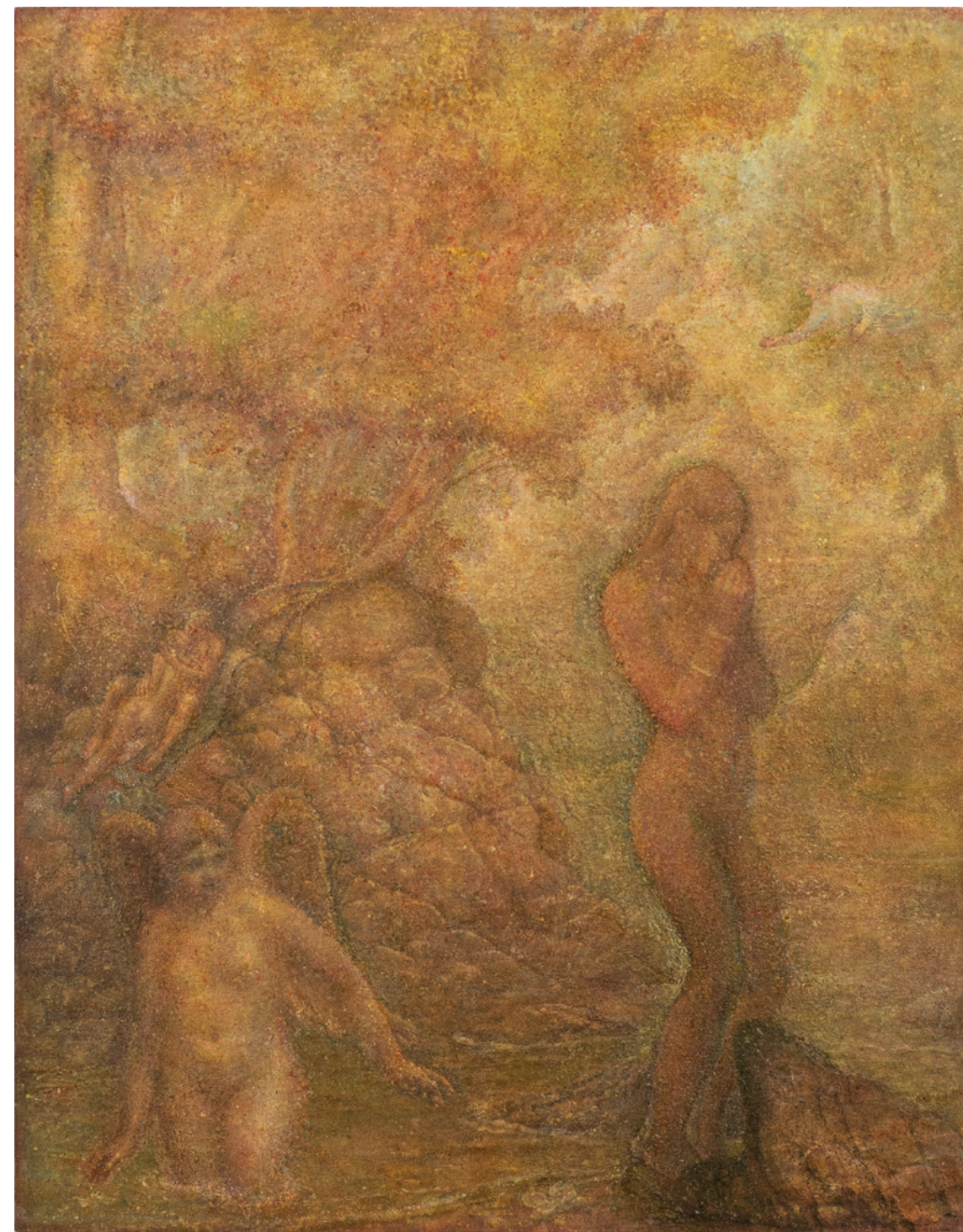
# After Grass Against Sea, Edward Weston

In our minds we retreat back to the edge,  
comfort ourselves in end-of-land sadness,  
rest in the lines of cypress that delineate  
one field from the next; the hill rise and its crest  
as it divides this from that, the clear cut  
before land rips away from ocean, grass  
spears rise against swollen seas.  
Let us bask in the spears' tips that push  
and stab into fog-lifted air: fine points  
exist, fine points puncture one realm from another,  
move in the ocean's pull away from land.  
Preserve edges, celebrate their distinct  
boundaries, let the wind rustle and stop,  
shake and stop, throttle only to pause and spread.

**Gabrielle Myers** is a Professor of English, writer, and chef in the Sacramento Valley of California. Gabrielle's memoir, *Hive-Mind*, details her time on an organic farm run by an activist female farmer. Access links to her published memoir, poems, essays, and articles, as well interviews, YouTube cooking channel, and seasonal recipe blog through her website: [www.gabriellemyers.com](http://www.gabriellemyers.com). Her manuscript *Break Self: Feed* was a finalist for the 2020 Catamaran Poetry Prize.

## ERIC HOLZMAN

*Prayer*, 2015–2020  
Oil and sand on canvas, 43 x 35 in.



COURTESY THE ARTIST