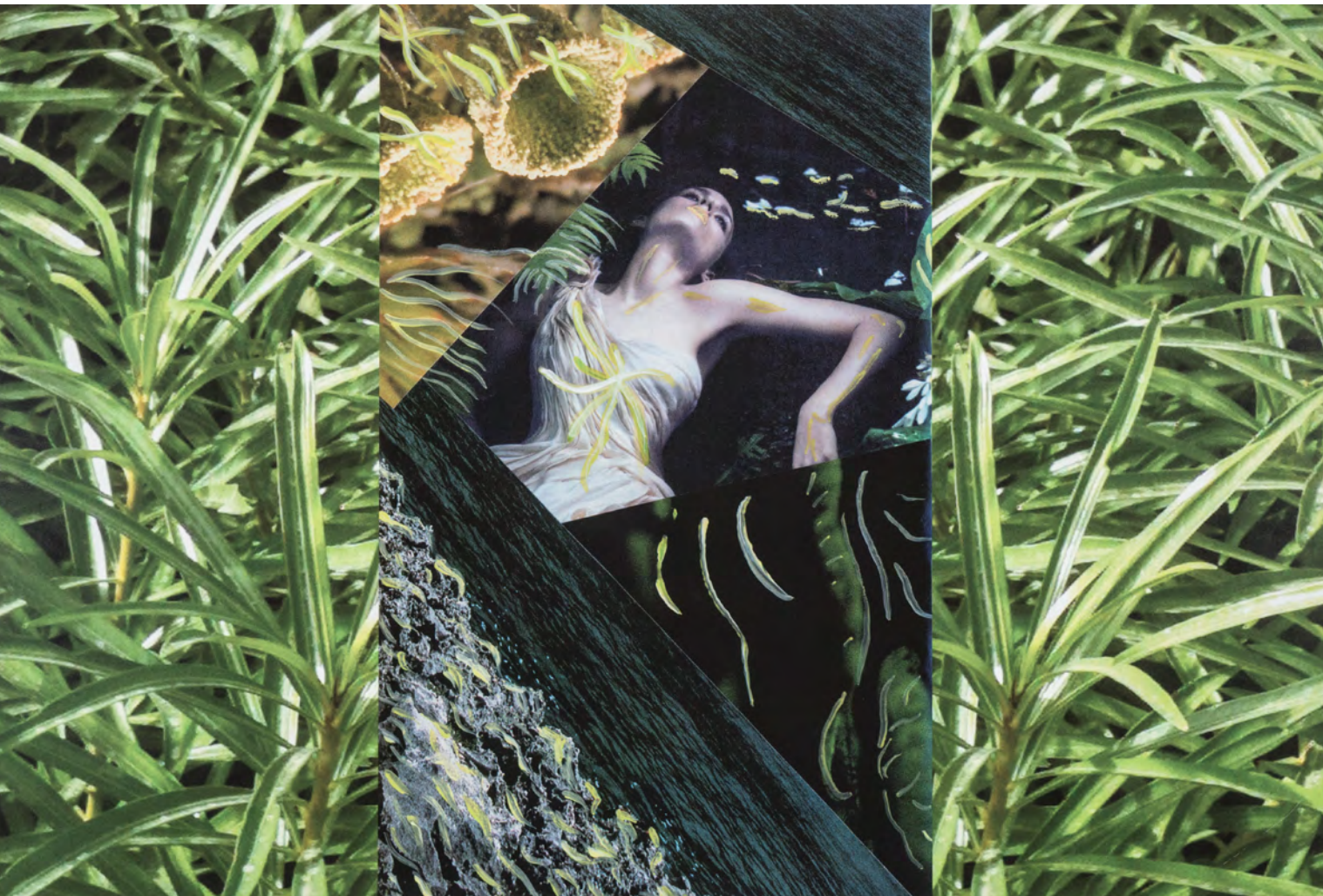


## IRIS IRINA SILVA

*A Natural State*, 2013  
Collage and Photography  
Digitally transferred  
on Wood, 24 x 36 in.



courtesy: the artist

## MELISSA REESER POULIN

### By the Gate

An old chair outside the garden,  
unable to hold it together.

Rust bloom, rain bogged,  
twined with bindweed  
in the unmowed grass.

You feel them, the teeth.  
The beaked pinching  
at your back.

So many beings at work,  
in urgent reuse  
of your materials.

You feel yourself becoming  
vast, grown small.

Already at home in you,  
a thousand new things.

**Melissa Reeser Poulin's** poems, reviews, and essays have appeared in *Calyx Journal*, *Sugar House Review*, *Propeller Quarterly*, and *Ping-Pong*. She is a graduate of Seattle Pacific University's low-residency MFA program, and she lives in Portland, Oregon.